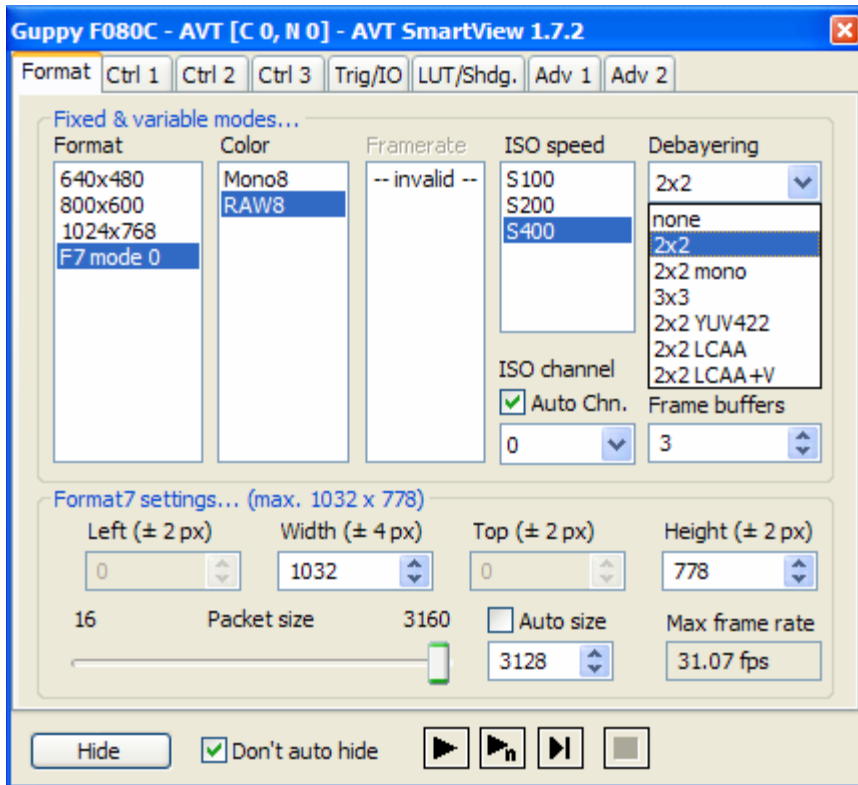


If you have a color Guppy but are not seeing a color image, remember that the Guppy does not do on-board debayering (color interpolation), so please remember to enable debayering in software on the PC side.

If using AVT SmartView, for example, navigate menus Camera, Settings, Settings_dialog, to the drop down box as shown. We suggest using 2x2 debayering for most situations.



All other AVT camera models have more on-board electronics, and can do on-board debayering (color members of Stingray, Pike, Marlin, Oscar, and Dolphin camera families).