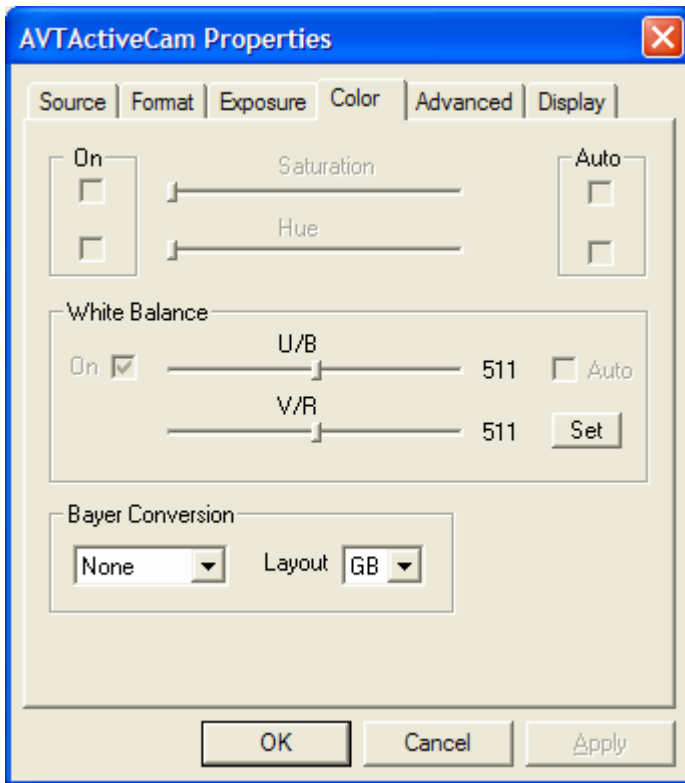


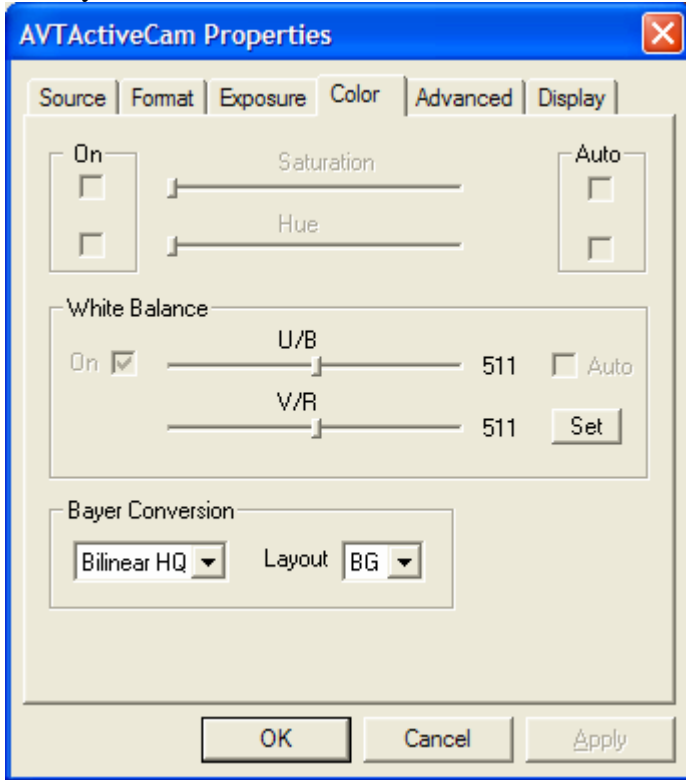
If you have a color Guppy, but are not seeing a color image, remember that the Guppy does not do on-board debayering (color interpolation), so please remember to enable debayering on the PC side.

Default Bayer conversion in AVT ActiveCam viewer is “None”:

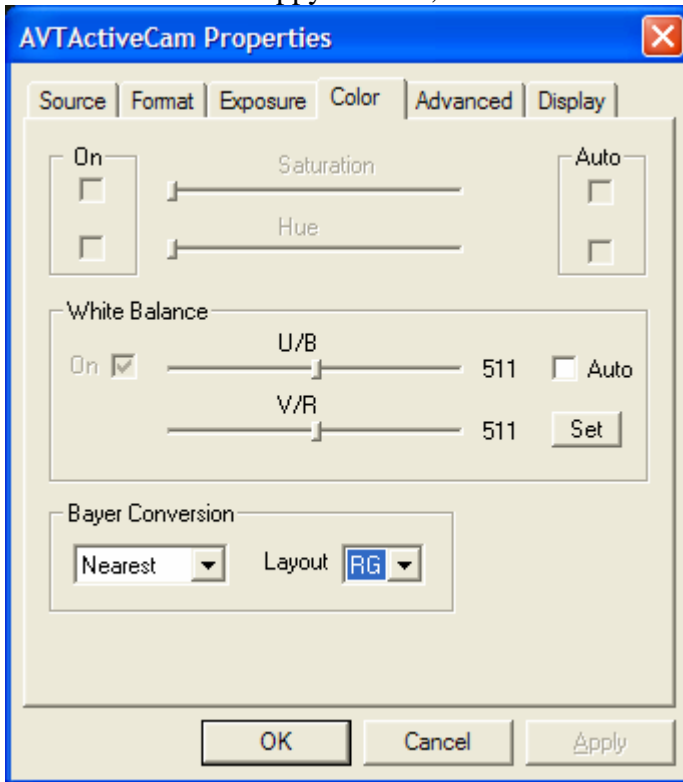


Enable Bayer conversion at the quality level you wish, and with the Layout sequence corresponding to your particular sensor.

Here for example, the camera happens to be the Guppy F-036C, with a sensor starting in BG layout:



Here we have the Guppy F-080C, with a sensor starting in RG layout:



All other AVT color cameras can do on-board debayering.